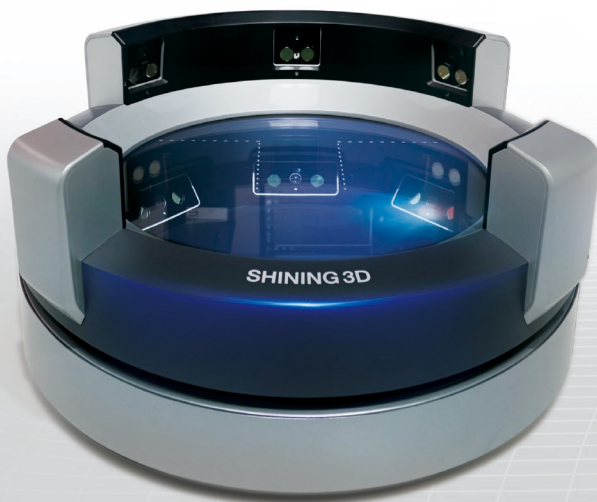




SHINING 3D®
For More Shining Ideas

FOOT 3D SCANNER

3D SCANNING SOLUTION FOR FOOTWEAR



- *Integrated Foot 3D Scanner*
AccuFoot



- *Multi-functional Handheld*
3D Scanner **EinScan Pro 2X Plus**
with **FootStation Pack**

Captures accurate data of foot to create custom insoles or shoes that fit perfectly

SHINING 3D has developed new module and new 3D scanner for footwear industry. With the new developed FootStation Pack, it makes our multi-functional handheld 3D scanner for foot scanning more easily and quickly.

- AccuFoot is our new 3D scanner takes just 3 seconds to bring customer's foot in 3D right after their standing on the platform.
- SHINING 3D foot 3D scanning solution offers detail foot analysis report from heel to toe through a quick experience. It is used by professional podiatrist, shoes designers, and shoe-makers for creating customized footwear, foot analysis and selection of the most suitable footwear.
- In the age of prosperous ecommerce shopping, this solution can also help reimagine the retail business. It will also reduce the return rate for shoes shopping online.

// Applications

EinScan Pro 2X Plus with FootStation Pack

EinScan Pro 2X Plus with FootStation Pack is not only able to scan foot, but also can scan other parts of human body such as face, arms, back and etc.



Orthotics



Prosthetics



Footwear



Custom-made
Equipment

AccuFoot



Foot Orthotics



Footwear



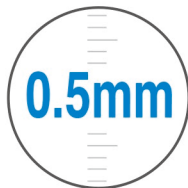
// Features

Fast Scan



The AccuFoot captures your foot 3D data in just 3 seconds.

High Accuracy



The accuracy of foot 3D data is up to $\pm 0.5\text{mm}$.

Detail Foot Analysis Report



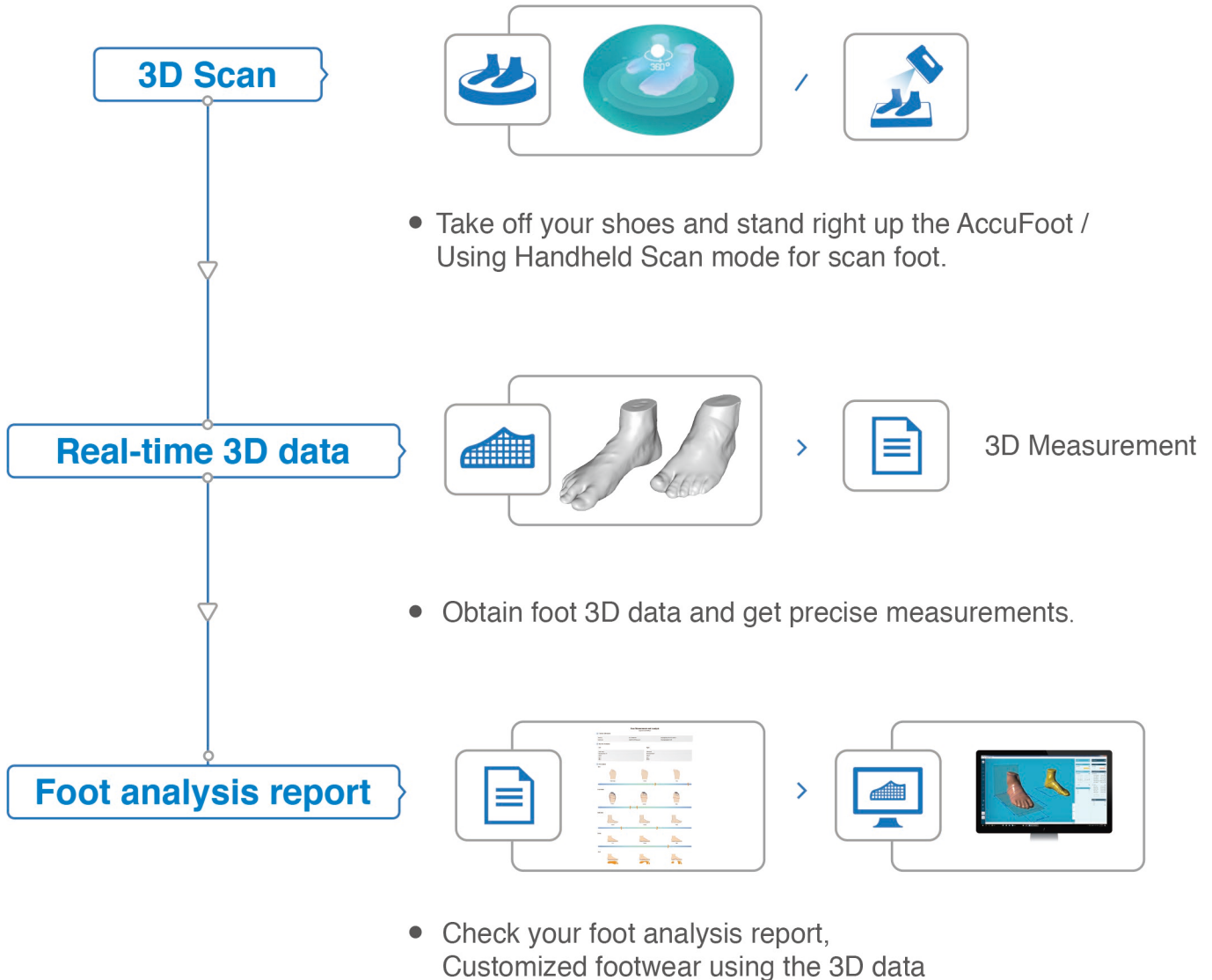
It generates a detail foot analysis report covering more than 30 points separate specific measurements from heel to toe.

Compatibility



Output in STL format.

// Learn how it works



// Technical Specifications

EinScan Pro 2X Plus

Multi-Functional
Handheld 3D Scanner



Scan Technology	Non-contact white light scanning, safe to human eyes
-----------------	--

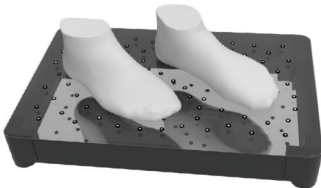
Foot Data Accuracy	$\leq \pm 0.5\text{mm}$
--------------------	-------------------------

Single Scan Range	208×136mm ² — 312×204mm ²
-------------------	---

Data Output	.STL
-------------	------

FootStation Pack

Add-on



Dimensions of Standing Platform	450mm×310mm×61.5mm
---------------------------------	--------------------

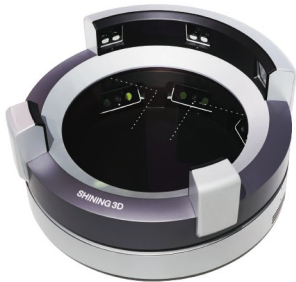
Foot Size Range	Maximum 44 (270mm)
-----------------	--------------------

Load Bearing of Standing Platform	120kg
-----------------------------------	-------

// Technical Specifications

AccuFoot

Integrated Foot
3D Scanner



Scan Method	Structure-light 3D scan
Alignment	Auto
Accuracy	±0.5mm
Light Source	Blue-light LED
Scan Time	3s
Data Format	STL
Operating Environment	15°C-35°C
Interface	WIFI
Power	19V, <150W
Dimensions (without package)	675*656*330mm
Weight	Around 29kg



APAC Headquarters

SHINING 3D Tech. Co., Ltd.
Hangzhou, China
P: +86-571-82999050
Email: sales@shining3d.com
No. 1398, Xiangbin Road, Wenyan, Xiaoshan,
Hangzhou, Zhejiang, China,
311258

EMEA Region

SHINING 3D Technology GmbH
Stuttgart, Germany
P: +49-711-28444089
Email: sales@shining3d.com
Breitwiesenstraße 28, 70565
Stuttgart, Germany

Americas Region

SHINING 3D Technology Inc.
San Francisco, United States
P: +1415-259-4787
Email: sales@shining3d.com
1740 César Chávez St. Unit D. San Francisco,
CA 94124

