

Cat5e Patch Cables

Crossover Cat5e UTP Patch Cables

Part No: See Chart (Length) + (Colour)

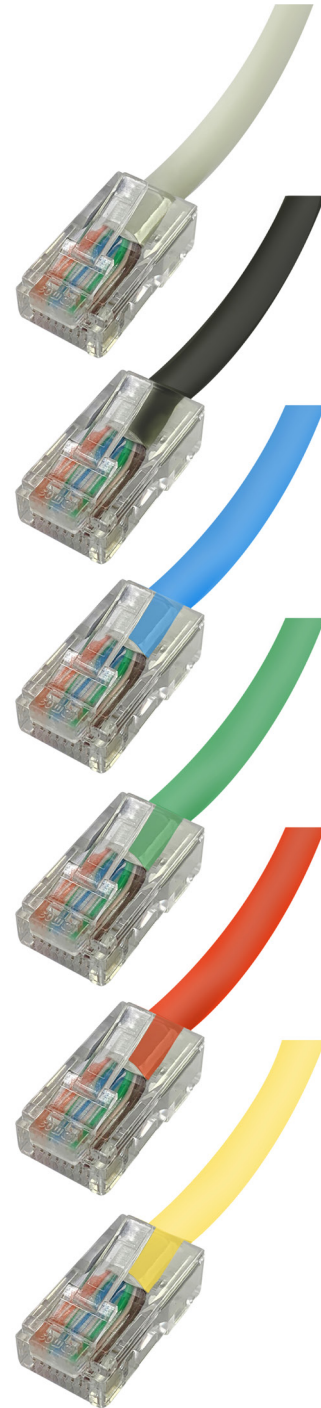
The Cat.5E cross-wired patch cables are designed for use in copper Gigabit applications; acting as the link cable between Gigabit card to switch or switch to switch. Supplied as an unbooted cable, all eight lines of the cable are connected whereas only four lines with the Cat.5 version.

Wired as follows: Pin No. Colour Pin No.

- 1 White/Orange 3
- 2 Orange/White 6
- 3 White/Green 1
- 4 Blue/White 7
- 5 White/Blue 8
- 6 Green/White 2
- 7 White/Brown 4
- 8 Brown/White 5

Features & Benefits

- Cat.5E UTP 24 AWG stranded cross-wired patch cables with all line connected - designed for use with copper Gigabit environments
- Full range of lengths and colours with backward compatibility with standard Cat.5 systems
- Supplied as unbooted cables which are fully tested with custom lengths available upon request









Cat5e Patch Cables

Crossover Cat5e UTP Patch Cables

Part No: See Chart (Length) + (Colour)

Part Number Chart

Length	Beige 	Black 	Blue 	Green 	Red 	Yellow 
0.5 Metre	1965-0.5X	1965-0.5XBK	1965-0.5XB	1965-0.5XG	1965-0.5XR	1965-0.5XY
1 Metre	1965-1X	1965-1XBK	1965-1XB	1965-1XG	1965-1XR	1965-1XY
1.5 Metre	1965-1.5X	1965-1.5XBK	-	1965-1.5XG	1965-1.5XR	-
2 Metre	1965-2X	1965-2XBK	1965-2XB	1965-2XG	1965-2XR	1965-2XY
3 Metre	1965-3X	1965-3XBK	1965-3XB	1965-3XG	1965-3XR	1965-3XY
5 Metre	1965-5X	1965-5XBK	1965-5XB	1965-5XG	1965-5XR	1965-5XY
10 Metre	1965-10X	1965-10XBK	1965-10XB	1965-10XG	1965-10XR	1965-10XY
15 Metre	1965-15X	1965-15XBK	-	-	1965-15XR	1965-15XY
25 Metre	1965-25X	1965-25XBK	1965-25XB	1965-25XG	1965-25XR	-